

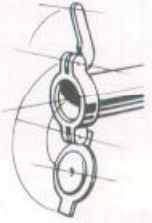
ADC-44 Conveyor by

HIGH or LOW temp the choice is yours...

A High Capacity **ENERGY SAVING**, self-purging stage conveyor...

- 244 Racks per Hour
- Operates **ONLY** when Racks are Inserted
- **Unrivaled** cleaning ability
- **Dual** rinsing system
- **User Friendly** conveyor
- Uses as little as **.49 gallons** per load

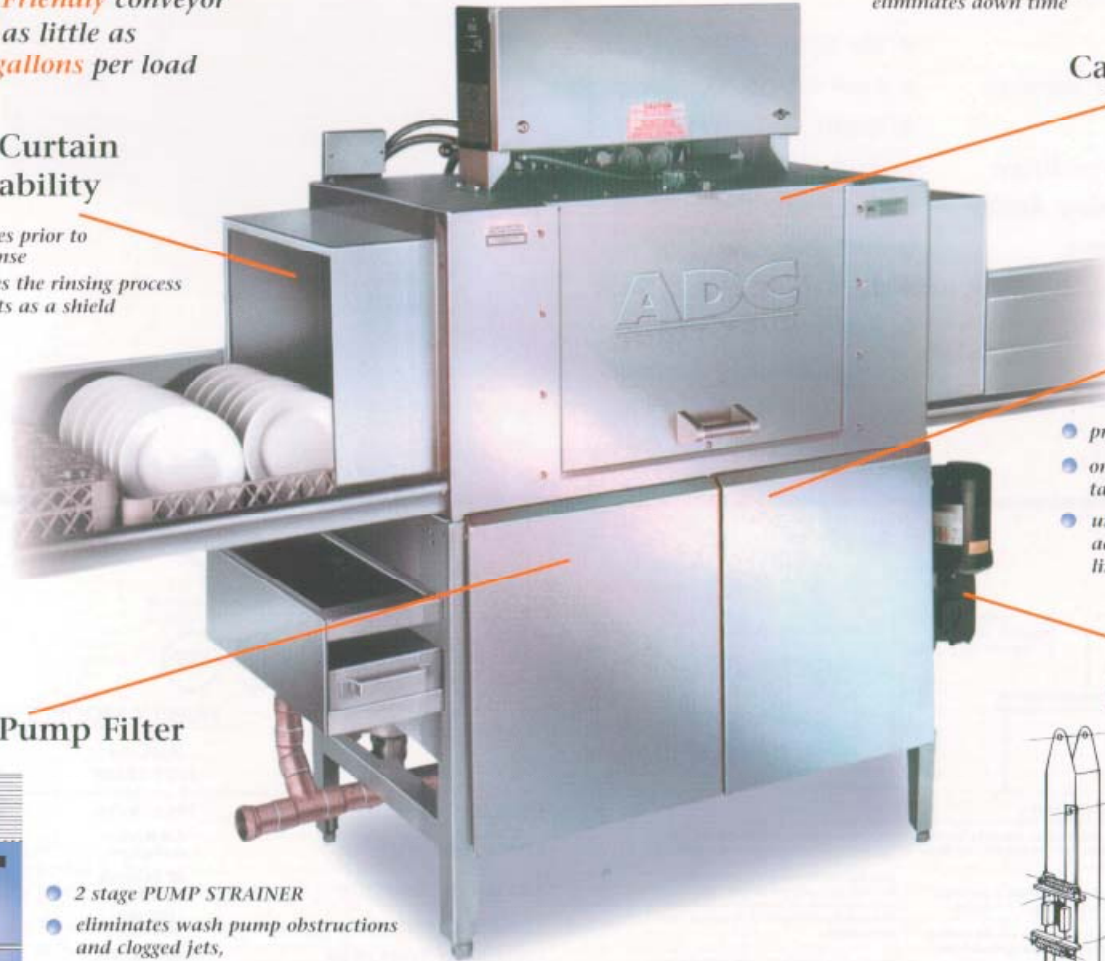
- flips open, snaps shut
- quick fast clearing of spray arms
- shortens the cleaning process & eliminates down time



Captive end caps

Water Curtain Rinseability

- activates prior to final rinse
- initiates the rinsing process and acts as a shield



Dual - Fail Safe Heater Control

- precise water control mechanism
- only allows heaters to operate when tank is full
- unaffected by heavy soil, water action, strong chemicals and lime build up

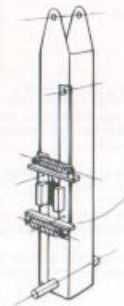
Drain Pump Filter



- 2 stage PUMP STRAINER
- eliminates wash pump obstructions and clogged jets,
- functions as drain stopper

Fail-Safe Conveyor System

- slip clutch design - stops rack movement
- once removed operation easily resumes
- eliminates damaged racks



Quality & Reliability... As tempting as it may be, a Conveyor cannot be built just to perform...
It must be built to Survive.

At American Dish Service, Quality People, Designs, and Products have been the foundation of our organization for over **45 years**.

www.americandish.com



American Dish Service
Manufacturers of Ware Washing Equipment

900 Blake Street Edwardsville, KS 66111-3820 Toll Free (800) 922-2178 Phone (913) 422-3700 Fax (913) 422-6630

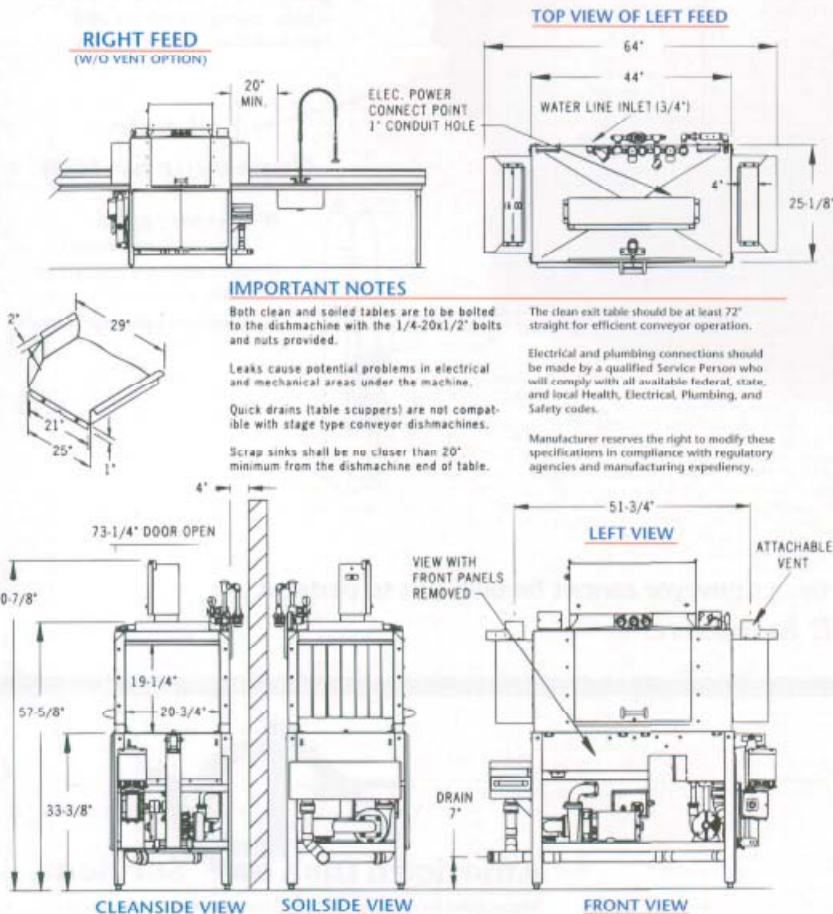
ADC-44 Conveyor

All these features are Standard on the ADC-44. While other manufacturers may offer these same features as Add-Ons... at American Dish our machines are COMPLETE & READY TO RUN.



- Auto-Fill
- Energy Saving Stage Washer
- No Circuit Boards
- Rack Saving Conveyor Drive
- 360 Sq. in. of Washing Action
- High Capacity Heaters
- Wide Opening Access Doors with Safety Interlock
- Skirted Motor Compartment
- Heavy Stainless Steel Const.
- No Operator Controls
- Low Water Consumption
- Quiet Operation
- 244 Racks per Hour
- Auto Cut-Off
- Self-Purging
- 11 Gallon Wash Tank
- 3HP Wash Pump
- Dual Rinsing System

Effective 5/28/02



ADC-44

FAMILY MODELS (left or right feed)

	ADC-44 HOT TEMP	ADC-44 CHEMICAL
NSF RATED CAPACITY (racks/hour)	244 racks/hr.	244 racks/hr.
CONVEYOR SPEED	6.8 ft/min (2.07 meters)	6.8 ft/min (2.07 meters)
WATER CONSUMPTION	.49 gal/rack (1.8 liters)	.49 gal/rack (1.8 liters)
TOTAL GALLONS PER HOUR	120 gph (454.2 liters)	120 gph (454.2 liters)
FINAL RINSE TEMP (20 psi)	180°F (82.2 C)	120°F (48.8 C)
SANITIZER	180° WATER	50ppm CHLORINE
ELECTRICAL POWER SUPPLY	208 / 240V, 3 PH, 60 AMP, 60 HZ (Requires clean circuit) 1PH, 50/60 AMP, 60 HZ (Single Phase requires one(1) 50 amp service with neutral and one(1) 60 amp service)	
MOTOR RATINGS	3HP WASH, 1/3HP RINSE 1/3HP CONVEYOR	
HEATER RATINGS	12KW WASH, 2.25KW RINSE	
RACK SIZE	STANDARD 19.75" x 19.75" (50.2 x 50.2 cm)	
ACCESS DOOR CLEARANCE	15" TALL x 24.5" WIDE (38.1 x 62.2 cm)	
RACK CLEARANCE (Through machine)	19.25" x 20.75" (48.9 x 52.7 cm)	
WATER INLET	(3/4") F.P.T.	
DRAIN SIZE	(2") F.P.T. (or 2" off floor to center)	
HEIGHT (with door open)	73.25" (186 cm)	
WIDTH (overall)	64" (162.5 cm)	
WIDTH, TABLE TO TABLE	44" (111.7 cm)	
DEPTH	29" (73.7 cm)	
SHIPPING WEIGHT	760 lbs (344.7 kg)	
SHIPPING VOLUME (crated)	121.6 CU. ft. (3.4 cu meters)	

ADS has built a strong history based on Customer Service, Quality and Reliability. A Commitment to Excellence is the driving force behind American Dish Service.

Super Q Glasswasher by

The Convenience of a Carousel with the Cleaning Power of a Dishmachine

Super Q Glasswasher

REVOLUTIONARY
IN CONCEPT
REVOLUTIONARY
IN DESIGN

- **Full load washing – saves power, water, and chemicals**
- **Fast – only 75 seconds per cycle**
- **Rotating spray arm - provides outstanding results**
- **Divided carousel, creates a washing chamber that cleans with a recirculating, high-volume water spray**
- **Load, unload & wash simultaneously**

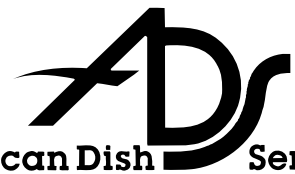


The Super Q (model ASQ) Glasswasher is revolutionary in both concept and design. It offers the cleaning action of a dishmachine in a carousel system. The carousel is divided into three positions by stainless steel panels. These panels isolate each compartment, controlling the water and washing action of the rotating spray.

With the push of the lever, the carousel easily rotates and locks into the next position. While the glasswasher does the cleaning, the bartender can unload spot-free glasses and load the glassware to be washed, efficiently cleaning full loads.

At American Dish Service, Quality People, Designs, and Products have been the foundations of our organization for over *45 years*.

www.americandish.com



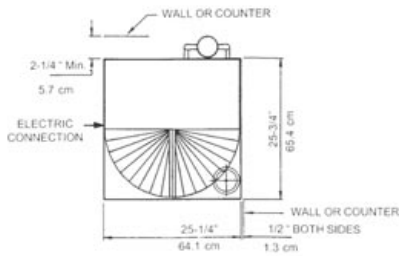
American Dish Service
Manufacturers of Ware Washing Equipment

900 Blake Street Edwardsville, KS 66111-3820 **Toll Free (800) 922-2178** **Phone (913) 422-3700** **Fax (913) 422-6630**

Super Q Glasswasher

THE WORLD'S BEEN WAITING FOR IT
AND NOW ADS HAS IT

- **120° final rinse** – allows rinse-aids to work providing spot free glassware
- **Manual turn** – eliminates washing one glass at a time
- **Sustainer heater** – maintains tank temperature
- **Built-in chemical storage** (one gallon containers)
- **Quiet operation**



TOP VIEW

CAUTION:

Electrical and Plumbing connections must be made by a qualified Service Person who will assure that the installation is in compliance with all available federal, state, and local Health, Electrical, Plumbing, and Safety codes.

CONNECT TO ELECTRICAL SUPPLY SOURCE
USING 14-12 AWG COPPER WIRE
CIRCUIT PROTECTION: 15 AMP CIRCUIT BREAKER
OR FUSE WITH A 15 AMP RATING

NOTE:
All dimensions listed have a tolerance of
+ or - 1/8" unless otherwise noted.



Model ASQ Specifications

MODEL ASQ

RATED CAPACITY (LOADS PER HOUR)	48
WASH TIME (SECONDS)	40
RINSE TIME (SECONDS)	14
DWELL (SECONDS)	21
TOTAL CYCLE TIME (SECONDS)	75
	57.6 GAL. PER HR.

WATER TEMPERATURE	120°F 49°C
WATER CONSUMPTION	1.2 GALLONS PER CYCLE 4.5 LITERS PER CYCLE
MOTORS	1/2 H.P., 3600 R.P.M. .373 KW
HEATER	350 W
ELECTRICAL RATINGS	115 VOLTS SINGLE PHASE 60 HZ
WATER INLET	1/2" F.P.T.
DRAIN	1 1/2" O.D. 3.8 CM
HEIGHT (OVERALL)	38-1/2" 97.8 CM
WIDTH (OVERALL)	25.25" 64.1 CM
DEPTH (OVERALL)	28" 71.1 CM
SHIPPING WEIGHT	200 POUNDS 91.2 kg
SHIPPING VOLUME	32.5 CU. FT. .92 CU. M.



FRONT VIEW

SIDE VIEW

*Manufacturer reserves the right to modify these specifications in compliance with regulatory agencies and manufacturing expediency.

Effective: 10/02

© 1002

HT-25 by

The NEXT GENERATION High-Temp Sanitizer

- Wash, rinse, and sanitize in as little as 45 seconds – Fastest in the industry!
- POWERFUL 3 HP PUMP – Scrubs away what others leave behind!
- Low water usage – only .85 gal. per load!



(AVAILABLE WITH)
STAINLESS STEEL BUILT-ON BOOSTER.



- Approved Dual Sanitizer – Same machine serves as either High or Low Temp
- Versatile door design – installs corner or straight

Increase your warewashing capacity without expanding your kitchen. Our HT-25 washes 35% FASTER with 33% LESS CHEMICALS, UTILITIES, AND WATER

The features of the HT-25 eliminate re-washes. A powerful design with powerful results!

At American Dish Service, Quality People, Designs, and Products have been the foundations of our organization for over **45 years**.

www.americandish.com



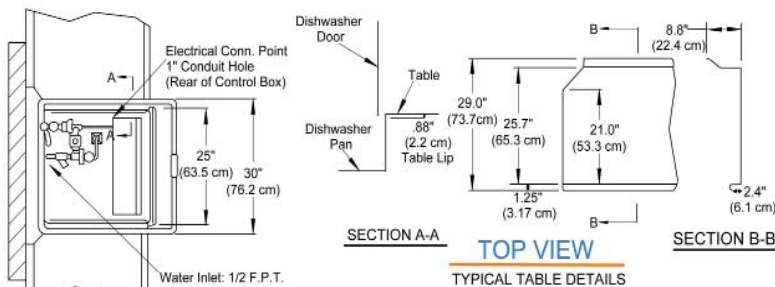
American Dish Service
Manufacturers of Ware Washing Equipment

900 Blake Street Edwardsville, KS 66111-3820 **Toll Free (800) 922-2178** **Phone (913) 422-3700** **Fax (913) 422-6630**

HT-25 *The NEXT GENERATION High-Temp Sanitizer*

This powerful, next generation, high-temp sanitizer provides you with all these features...

- Available with either 45 or 60 second time cycle
- Patented Self Cleaning Spray System
- Auto fill and Auto Shut Off (Standard Equipment)
- Two stage SS Drain Filter – Eliminates clogged pumps
- Built-in Scrap Accumulator – Keeps Wash Tank Clean
- 3 HP Wash Pump
- ADS patented Low-Water Protection
- Durable-life tank heater
- Patented Captive spray arm end caps – no parts to lose
- 18" Door Opening
- Configured for corner or inline – installs without conversion
- No troublesome circuit boards – prevents down time



American Dish Service
Manufacturers of Ware Washing Equipment

Model HT-25 Specifications

U.S. REGISTERED PATENTS

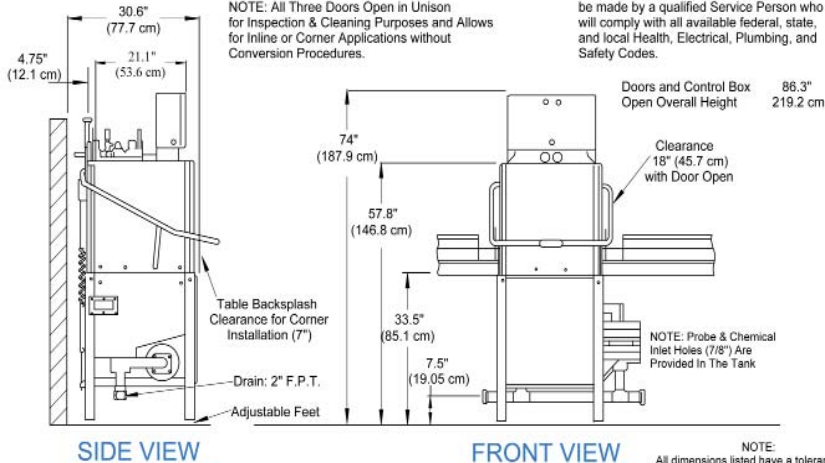
RATED CAPACITY (Racks/Hour)	72 NSF Rated
WASH TANK CAPACITY	11 Gal. (41.63 Liters)
WATER TEMPERATURE, WASH	160 F. (71 C)
WATER TEMPERATURE, RINSE	180 F. (82.2 C)
WATER CONSUMPTION	0.85 Gallons/Rack (3.593 Liters/Rack)
WASH MOTOR	3 HP
ELECTRICAL REQUIREMENTS	3PH, 208/240V, 40 AMP, 60 HZ 5-wire connection (neutral, ground, 3 #8 power wires, 50a capacity) SINGLE PH: 208/240V, DUAL CIRCUITS 60/30 AMP, 60HZ CIRCUIT 1: (neutral, ground, 2 #10 ga. wires, 40a capacity) CIRCUIT 2: (2 #6 ga. wires, 75a capacity)
WASH HEATER	HT-25HT-34 W/FACTORY INSTALLED BOOSTER: (3-Ph Only) single point connection req's 208/240V, 3PH, 50a, 5-wire connection (Neutral, Ground, 3 #8 ga. power wires, 65a capacity) High leg goes to L-38KW
RACK SIZE19-3/4" X 19-3/4" (50.2 cm x 50.2 cm)
DOOR CLEARANCE18" (45.72 cm)
WATER INLET (1)1/2" F.P.T.
DRAIN SIZE2" F.P.T.
HEIGHT (all doors closed)74" (187.96 cm)
WIDTH, TABLE TO TABLE (Inline Model)25" (63.5 cm)
WIDTH w/SCRAP ACCUMULATOR (Overall)37" (93.9 cm)
DEPTH (Overall)33.5" (85.0 cm)
SHIPPING WEIGHT485 POUNDS (219.9 kg)
SHIPPING VOLUME81.51 cu. feet

* Manufacturer reserves the right to modify these specifications in compliance with regulatory agencies and manufacturing expediency.

CAUTION:

Electrical and plumbing connections must be made by a qualified Service Person who will comply with all available federal, state, and local Health, Electrical, Plumbing, and Safety Codes.

NOTE: All Three Doors Open in Unison for Inspection & Cleaning Purposes and Allows for Inline or Corner Applications without Conversion Procedures.



© 10/2010

Effective: 10/2010

ADS has built a strong history based on Customer Service, Quality and Reliability. A Commitment to Excellence is the driving force behind American Dish Service.

"L" Series by



The Prudent Choice

Remarkable performance with only 1.2 gallons of water per rack!

The "L" Series

DECREASES your Chemical Usage
SAVES on Sewer Surcharges
REDUCES Heating Costs
LOWERS Water Bills

*Maximum Capacity:
55 racks per hour!
(60 second time cycle)*



L-3DWC

Corner inside sump with built-in scrap accumulator

*A true
LOW-ENERGY,
dump and fill
dishmachine!*



L-3DW

Pass-thru inside sump with built-in scrap accumulator

All "L" Series, Low-Water Machines are Convertible
(corner to pass-thru or pass-thru to corner).

A True 3-door Design, with only two doors opening in either direction.

At American Dish Service, Quality People, Designs, and Products have been the foundations of our organization for over **45 years**.

www.americandish.com



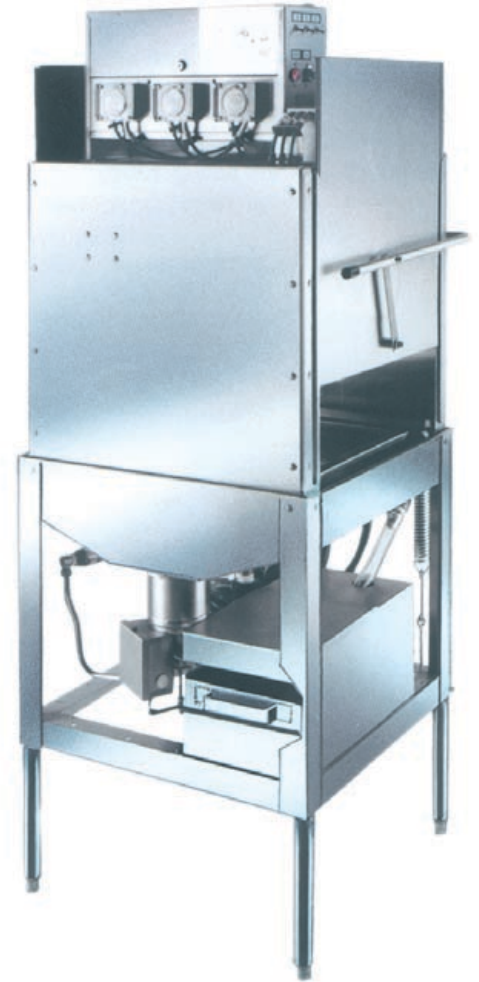
American Dish Service
Manufacturers of Ware Washing Equipment

900 Blake Street Edwardsville, KS 66111-3820 Toll Free (800) 922-2178 Phone (913) 422-3700 Fax (913) 422-6630

"L" Series

LOW WATER USE - HIGH SPEED OPERATION

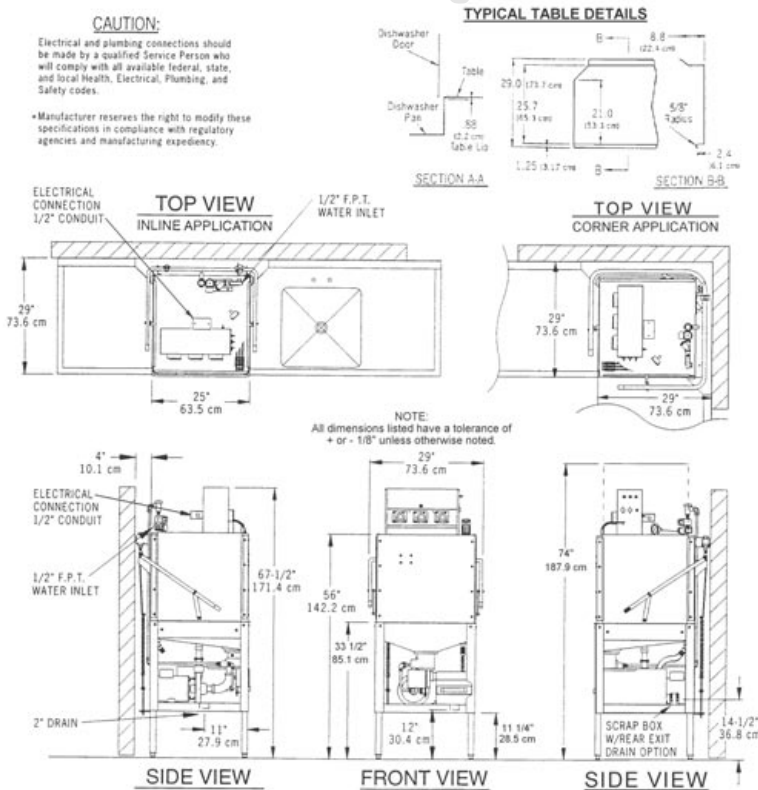
Available in 60, 72, and 90 second time cycles
Two-stage filter protects pump and spray jets
Stainless steel sump and impeller
1.2 gallons of water per rack



- **Top Mount Controls**
- **Exterior Mounted Chemical Pump Heads**
- **Quick-disconnect, Easy Service Access, Electrical Controls**
- **True 3-Door Design, with only 2 Doors opening in either configuration**
 - Eliminates water on back wall
 - Doors stay in alignment
- **Eye-Level Temperature Gauge**
- **Built-in De-liming Switch**
- **Large Capacity Internal Scraper (Inside Sump Only)**
- **No-Adjustment Solenoid Replacement**
- **1 1/2 H.P. Wash & Rinse Pump**
- **Prime Switches**
- **Automatic Chemical Feed**
- **Nylatron® Strips to Protect Stainless Doors**



L Series SPECIFICATIONS



	FAMILY MODELS		
	L60-3DW L60-3DWC	L72-3DW L72-3DWC	L90-3DW L90-3DWC
NSF RATED CAPACITY (RACKS/HOUR)	55	46	37
WASH TIME (IN SECONDS)	36	43	50
RINSE TIME (IN SECONDS)	15	19	30
DWELL (IN SECONDS)	09	10	10
GALLONS PER HOUR	66	55	44
TOTAL CYCLE TIME (IN SECONDS)	60	72	90
WATER TEMPERATURE OF SUPPLY WATER (NSF)	120° F. MINIMUM or 49° Celsius		
WATER CONSUMPTION (NSF RATED)	1.2 GALS. PER CYCLE or 4.5 liters/cycle		
MOTOR RATING	(1.125 KW) 1.5 HORSEPOWER		
ELECTRICAL RATING (NEC)	115 Vac, 20amp breaker, 50/60Hz, 1 phase Connect to Supply Source using 10-12 AWG Copper wires using non-time delay fuse at 20 amp rating or 20 amp circuit breaker.		
RACK SIZE	STANDARD 19.75" X 19.75" or 50.3 x 50.2 cm		
DOOR CLEARANCE	17.75" TALL x 20.75" WIDE or 45.1 x 52.7 cm		
WATER INLET	(1/2") F.P.T.		
DRAIN SIZE (Scrap Trap)	2" O.D.		
HEIGHT (ADJUSTER FEET WILL GIVE)	MIN: 67.5" MAX: 68.48" or 171.5 to 173.9 cm		
WIDTH (OVERALL)	29" or 73.8 cm		
WIDTH, TABLE TO TABLE (INLINE MODEL)	25" or 63.5 cm		
DEPTH (OVERALL)	28" or 71.1 cm		
SHIPPING WEIGHT	307 POUNDS or 139.7 kg		
SHIPPING VOLUME (CRATED)	54.2 CU. FT. or 1.53 cu. meters		

ADS has built a strong history based on Customer Service, Quality and Reliability. A Commitment to Excellence is the driving force behind American Dish Service.